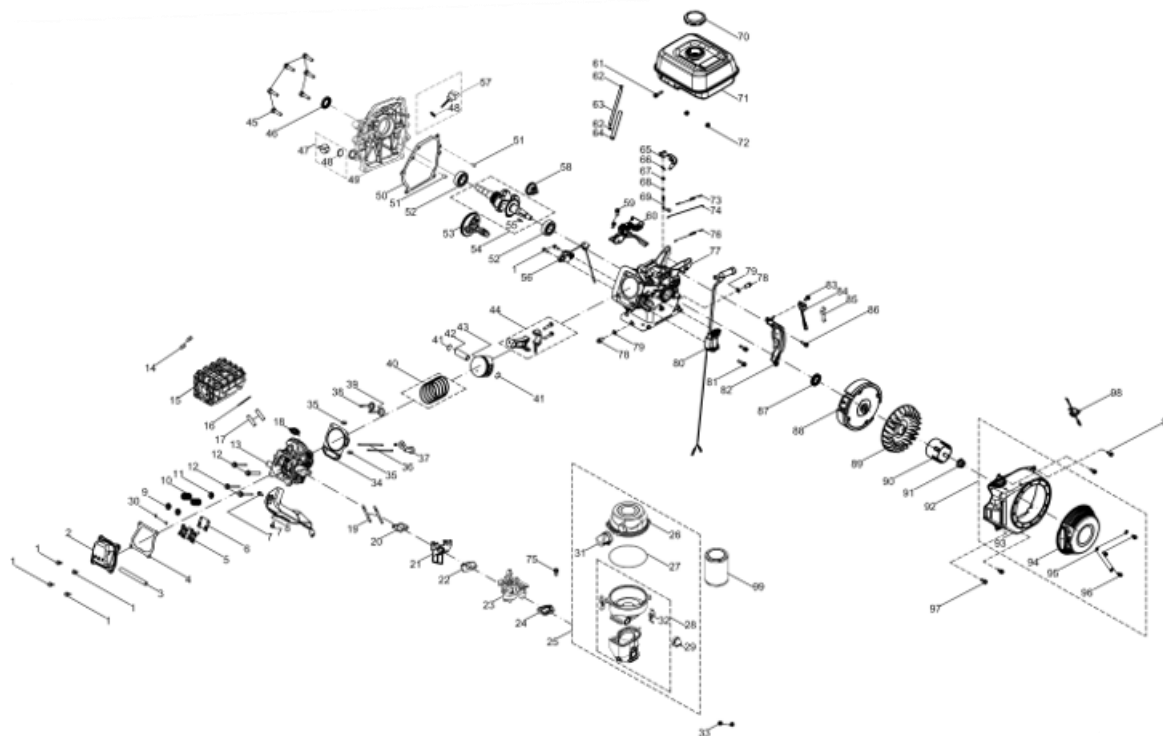


HIGH-QUALITY MOTOR



MODELO:- BON-P-GE-9.0HP



Numero de pieza	BOHNOEFFER CODIGO	DESCRIPCION EN ESPANOL	DESCRIPTION IN ENGLISH
1	BON-P-GE-9.0HP-1	Perno, M6 x 25	Bolt, M6x25
2	BON-P-GE-9.0HP-2	Tapa de la válvula	Valve Cover
3	BON-P-GE-9.0HP-3	Manguera de respiradero	Breather Hose
4	BON-P-GE-9.0HP-4	Junta, tapa de válvula	Gasket, Valve Cover
5	BON-P-GE-9.0HP-5	Tornillo, M3 x 8	Screw, M3x8
6	BON-P-GE-9.0HP-6	Placa de respiradero	Breather Plate
7	BON-P-GE-9.0HP-7	Válvula de respiración	Breather Valve
8	BON-P-GE-9.0HP-8	Cubierta interior, cubierta de válvula	Inner Cover, Valve Cover
9	BON-P-GE-9.0HP-9	Tornillo, M5 x 12	Screw, M5x12
10	BON-P-GE-9.0HP-10	Junta, tapa de válvula	Gasket, Valve Cover
11	BON-P-GE-9.0HP-11	Conjunto de balancines	Rocker Arm Assembly
12	BON-P-GE-9.0HP-12	Base del balancín	Rocker Arm Base
13	BON-P-GE-9.0HP-13	Armario de válvulas	Valve Locker
14	BON-P-GE-9.0HP-14	Asiento de resorte de válvula	Valve Spring Seat
15	BON-P-GE-9.0HP-15	Resorte de válvula	Valve Spring
16	BON-P-GE-9.0HP-16	Sello de la 2alvula de admisión	Intake Valve Seal
17	BON-P-GE-9.0HP-17	Tuerca, M8	Nut, M8

18	BON-P-GE-9.0HP-18	Perno, M6 × 12	Bolt, M6×12
19	BON-P-GE-9.0HP-19	Sudario	Shroud
20	BON-P-GE-9.0HP-20	Empaquetadura	Gasket
21	BON-P-GE-9.0HP-21	Culata del cilindro	Sylinder Head
22	BON-P-GE-9.0HP-22	Bujía	Spark Plug
23	BON-P-GE-9.0HP-23	Semental	Stud
24	BON-P-GE-9.0HP-24	Semental	Stud
25	BON-P-GE-9.0HP-25	Junta, aislante del carburador	Gasket, Carburetor Insulator
26	BON-P-GE-9.0HP-26	Aislante	Insulator
27	BON-P-GE-9.0HP-27	Carburador de junta	Gasket Carburetor
28	BON-P-GE-9.0HP-28	Carburador	Carburetor
29	BON-P-GE-9.0HP-29	Junta, carburador	Gasket, Carburetor
30	BON-P-GE-9.0HP-30	Conjunto de filtro de aire	Air Filter Assembly
31	BON-P-GE-9.0HP-31	Conjunto de la base del filtro de aire	Air Filter Base Assembly
32	BON-P-GE-9.0HP-32	Deflector del filtro de aire	Air Filter Baffle
33	BON-P-GE-9.0HP-33	Elemento de filtro de aire	Air Filter Element
34	BON-P-GE-9.0HP-34	Cubierta del filtro de aire	Air Filter Cover
35	BON-P-GE-9.0HP-35	Tornillo	Bolt
36	BON-P-GE-9.0HP-36	Tuerca, M6	Nut, M6
37	BON-P-GE-9.0HP-37	Espárrago, M8 × 60	Stud, M8×60
38	BON-P-GE-9.0HP-38	Culata Junta	Gasket, Cylinder Head
39	BON-P-GE-9.0HP-39	Pin, φ10 × 14	Pin,φ10×14
40	BON-P-GE-9.0HP-40	Válvula de admisión	Intake Vavle
41	BON-P-GE-9.0HP-41	Válvula de escape	Exhaust Valve
42	BON-P-GE-9.0HP-42	Juego de anillos de pistón	Piston Ring Set
43	BON-P-GE-9.0HP-43	Varilla de empuje	Push Rod
44	BON-P-GE-9.0HP-44	Alzaválvulas	Tappet
45	BON-P-GE-9.0HP-45	Pistón	Piston
46	BON-P-GE-9.0HP-46	Anillo de seguridad	Circlip

47	BON-P-GE-9.0HP-47	Pasador del pistón	Piston Pin
48	BON-P-GE-9.0HP-48	Ensamblaje de biela	Connecting Rod Assembly
49	BON-P-GE-9.0HP-49	Sensor de aceite	Oil Sensor
50	BON-P-GE-9.0HP-50	Perno, M6 × 18	Bolt, M6×18
51	BON-P-GE-9.0HP-51	Cojinete, TM6206	Bearing, TM6206
52	BON-P-GE-9.0HP-52	Cigüeñal	Crankshaft
53	BON-P-GE-9.0HP-53	Llave Woodruff	Woodruff Key
54	BON-P-GE-9.0HP-54	Árbol de levas	Camshaft
55	BON-P-GE-9.0HP-55	Pin, $\phi 8 \times 14$	Pin, $\phi 8 \times 14$
56	BON-P-GE-9.0HP-56	Junta, cárter	Gasket, Crankcase
57	BON-P-GE-9.0HP-57	Tapa del cárter	Crankcase Cover
58	BON-P-GE-9.0HP-58	Sello de aceite, $\phi 25 \times \phi 41.25 \times 6$	Oil Seal, $\phi 25 \times \phi 41.25 \times 6$
59	BON-P-GE-9.0HP-59	Perno, M8 × 35	Bolt, M8×35
60	BON-P-GE-9.0HP-60	Varilla graduada	Dipstick
61	BON-P-GE-9.0HP-61	Varilla graduada	Dipstick
62	BON-P-GE-9.0HP-62	Junta tórica, $\phi 15,8 \times 2,5$	O-Ring, $\phi 15.8 \times 2.5$
63	BON-P-GE-9.0HP-63	Gobernador Gear	Governor Gear
64	BON-P-GE-9.0HP-64	Eje del engranaje del gobernador	Governor Gear Shaft
65	BON-P-GE-9.0HP-65	Junta tórica, $\phi 5.2 \times 1.9$	O-Ring, $\phi 5.2 \times 1.9$
66	BON-P-GE-9.0HP-66	Sello de aceite, $\phi 6 \times \phi 11 \times 4$	Oil Seal, $\phi 6 \times \phi 11 \times 4$
67	BON-P-GE-9.0HP-67	Pasador de chaveta	Cotter Pin
68	BON-P-GE-9.0HP-68	Palanca del gobernador	Governor Lever
69	BON-P-GE-9.0HP-69	Abrazadera de bloqueo del varillaje del estrangulador	Choke Linkage Lock Clamp
70	BON-P-GE-9.0HP-70	Vínculo del acelerador	Throttle Linkage
71	BON-P-GE-9.0HP-71	Primavera inactiva	Idle Spring
72	BON-P-GE-9.0HP-72	Primavera del gobernador	Governor Spring
73	BON-P-GE-9.0HP-73	Conjunto de soporte de ajuste del acelerador	Throttle Adjust Bracket Assembly
74	BON-P-GE-9.0HP-74	Conjunto de soporte de engranaje del gobernador	Governor Gear Bracket Assembly

75	BON-P-GE-9.0HP-75	Manguera de combustible	Fuel Hose
76	BON-P-GE-9.0HP-76	Abrazadera	Clamp
77	BON-P-GE-9.0HP-77	Acortar	Clip
78	BON-P-GE-9.0HP-78	Perno de tierra	Earth Bolt
79	BON-P-GE-9.0HP-79	Arandela, $\phi 10 \times 1,5 \times \phi 16$	Washer, $\phi 10 \times 1.5 \times \phi 16$
80	BON-P-GE-9.0HP-80	Caja del cigüeñal	Crankcase
81	BON-P-GE-9.0HP-81	Sello de aceite, $\phi 30 \times \phi 46 \times 8$	Oil Seal, $\phi 30 \times \phi 46 \times 8$
82	BON-P-GE-9.0HP-82	Módulo de ignición	Ignition Module
83	BON-P-GE-9.0HP-83	Tablero de alambre	Wire Board
84	BON-P-GE-9.0HP-84	Volante	Flywheel
85	BON-P-GE-9.0HP-85	Ventilador	Cooling Fan
86	BON-P-GE-9.0HP-86	Copa de inicio	Starter Cup
87	BON-P-GE-9.0HP-87	Tuerca, M14 \times 1,5	Nut, M14 \times 1.5
88	BON-P-GE-9.0HP-88	Arrancador de retroceso	Recoil Starter
89	BON-P-GE-9.0HP-89	Vivienda del ventilador	Blower Housing
90	BON-P-GE-9.0HP-90	Arrancador de retroceso	Recoil Starter
91	BON-P-GE-9.0HP-91	Arandela, $\phi 6$	Washer, $\phi 6$
92	BON-P-GE-9.0HP-92	Perno, M6 \times 10	Bolt, M6 \times 10
93	BON-P-GE-9.0HP-93	Soporte del filtro de aire	Air Filter Bracket
94	BON-P-GE-9.0HP-94	Acortar	Clip
95	BON-P-GE-9.0HP-95	Tapa de la válvula	Valve Cover