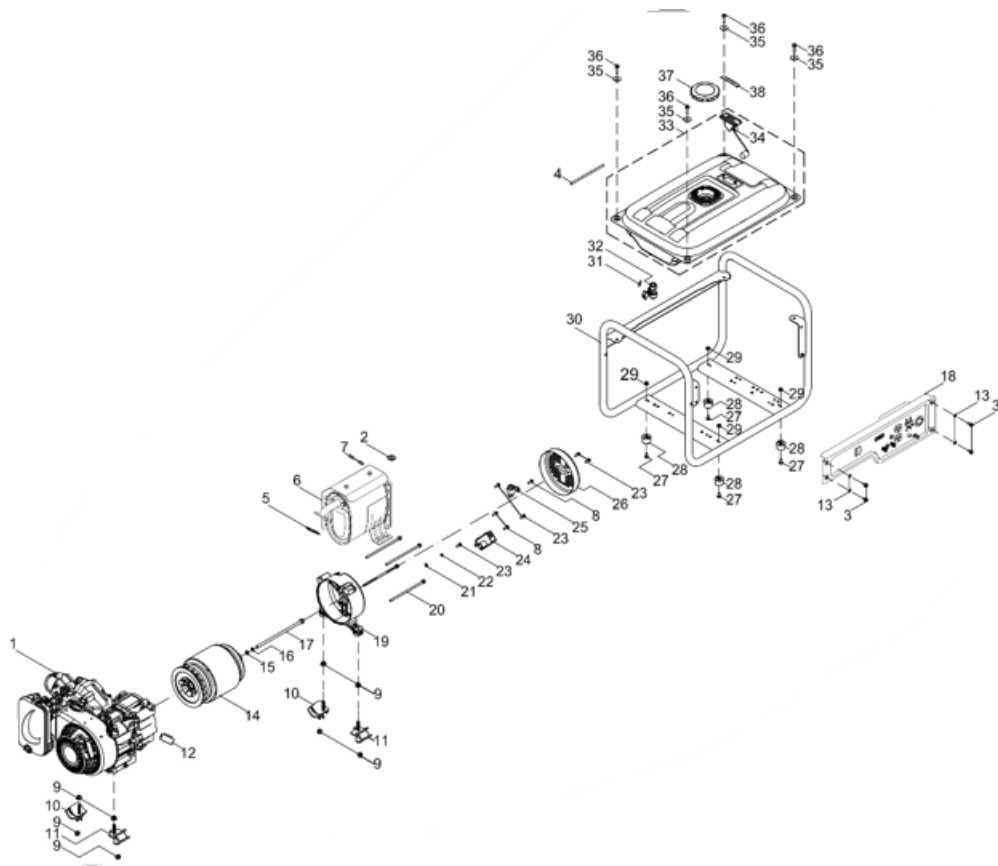


GASOLINE GENERATOR



MODELO :- BON-P-GG-2.8KW

MOTOR - 7.0HP



Numero de pieza	BOHNOEFFER CODIGO	DESCRIPCION EN ESPANOL	DESCRIPTION IN ENGLISH
1	BON-P-GG-2.8KW-GP1	Motor	Engine
2	BON-P-GG-2.8KW-GP2	Arandela, $\phi 8 \times 2 \times \phi 24$	Washer, $\phi 8 \times 2 \times \phi 24$
3	BON-P-GG-2.8KW-GP3	Perno, M6x12	Bolt, M6x12
4	BON-P-GG-2.8KW-GP4	Tubo de fibra de vidrio, $\phi 8 \times 106$	Fiberglass Tube, $\phi 8 \times 106$
5	BON-P-GG-2.8KW-GP5	Junta, silenciador	Gasket, Muffler
6	BON-P-GG-2.8KW-GP6	Silenciador	Muffler
7	BON-P-GG-2.8KW-GP7	Tuerca, M8	Nut, M8
8	BON-P-GG-2.8KW-GP8	Perno, M5x18	Bolt, M5x18
9	BON-P-GG-2.8KW-GP9	Tuerca, M8	Nut, M8
10	BON-P-GG-2.8KW-GP10	Almohadilla amortiguadora	Damping Pad
11	BON-P-GG-2.8KW-GP11	Almohadilla amortiguadora	Damping Pad
12	BON-P-GG-2.8KW-GP12	Acortar	Clip
13	BON-P-GG-2.8KW-GP13	Junta, perno de drenaje	Gasket, Drain Bolt
14	BON-P-GG-2.8KW-GP14	Alternador	Alternator
15	BON-P-GG-2.8KW-GP15	Arandela, $\phi 8$	Washer, $\phi 8$
16	BON-P-GG-2.8KW-GP16	Arandela, $\phi 8$	Washer, $\phi 8$

17	BON-P-GG-2.8KW-GP17	Perno, M8×1×180	Bolt, M8×1×180
18	BON-P-GG-2.8KW-GP18	Panel de control	Control Panel
19	BON-P-GG-2.8KW-GP19	Soporte trasero	Rear Bracket
20	BON-P-GG-2.8KW-GP20	Perno, M6×130	Bolt, M6×130
21	BON-P-GG-2.8KW-GP21	Arandela, φ5	Washer, φ5
22	BON-P-GG-2.8KW-GP22	Arandela, φ5	Washer, φ5
23	BON-P-GG-2.8KW-GP23	Perno, M5×14	Bolt, M5×14
24	BON-P-GG-2.8KW-GP24	Regulador de voltaje	Voltage Regulator
25	BON-P-GG-2.8KW-GP25	Cepillo	Brush
26	BON-P-GG-2.8KW-GP26	Cubierta final	End Cover
27	BON-P-GG-2.8KW-GP27	Tornillo, M6×12	Screw, M6×12
28	BON-P-GG-2.8KW-GP28	Almohadilla amortiguadora	Damping Pad
29	BON-P-GG-2.8KW-GP29	Tuerca, M6	Nut, M6
30	BON-P-GG-2.8KW-GP30	Conjunto de marco	Frame Assembly
31	BON-P-GG-2.8KW-GP31	Abrazadera	Clamp
32	BON-P-GG-2.8KW-GP32	Interruptor de combustible	Fuel Switch
33	BON-P-GG-2.8KW-GP33	Depósito de combustible	Fuel Tank
34	BON-P-GG-2.8KW-GP34	Medidor de combustible	Fuel Meter
35	BON-P-GG-2.8KW-GP35	Arandela, φ6.5×2×φ25	Washer, φ6.5×2×φ25
36	BON-P-GG-2.8KW-GP36	Perno, M6×25	Bolt, M6×25
37	BON-P-GG-2.8KW-GP37	Tapa del combustible	Fuel Cap
38	BON-P-GG-2.8KW-GP38	Clip de sentido aceitoso	Oily Sense Clip